



AUTO PERFORMANCE

CATALOGUE 2017

CONTENT

CATALOGUE 2017



RACEWEAR	4
GLOVES	18
FOOTWEAR	30
UNDERWEAR	40
KARTING	56
MECHANIC GEAR	68
BAGS	76



RACEWEAR



PUMA
MOTORSPORT
RACEWEAR

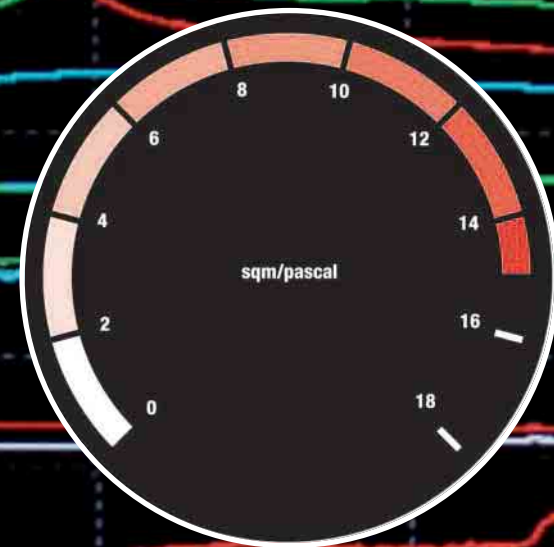


PUMA MOTORSPORT

RACEWEAR

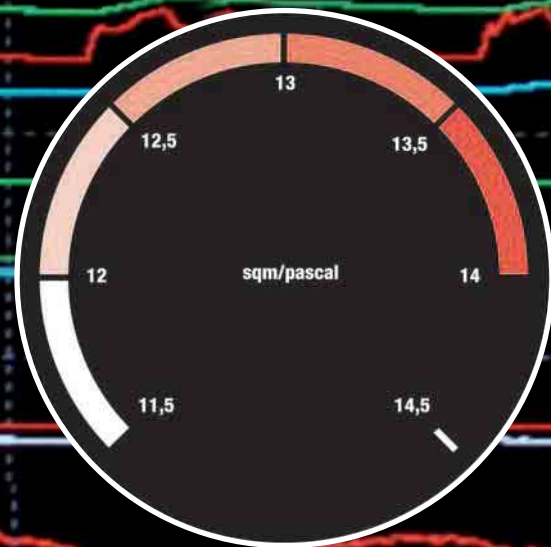


AVANTI SUIT SPECIFICATIONS



ISO 31092 Water-Vapor

Outperforms the standard by 43%
This is the ability of the suit to transport the vapor (sweat) from the inside to the outside. The data is expressed in Square meters / Pascal.



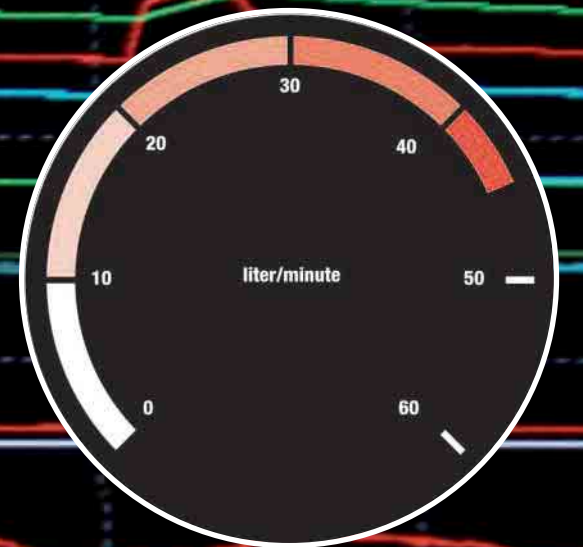
ISO 9151 Heat Transfer Index HTi24

Outperforms the standard by 3 seconds
This is the FIA homologation requirement. During a heat exposure, the temperature on the inner surface of the suit (the one in contact with driver's skin) can increase by no more than 24°C within 11 sec.



Suit Weight

Less than 1Kg in size 56.



ISO 9237 Air Permeability Test

This is the ability of the suit to let air pass through the material.
Data expressed in Liters per Minute.

AVANTI SUIT Art. 508525



01 BLACK-WHITE



02 PUMA RED-WHITE



03 ROYAL BLUE-WHITE



04 WHITE-BLACK



05 GREY-BLACK

FIA (8856-2000) approved
 SFI 32A/5 approved

The Avanti utilizes revolutionary and proprietary advancements in material, form, function and design synthesizing the ultimate drivers environment for performance and endurance.

Lightweight and breathable SLW compound quilting of a unique 3-layer design consisting of an Aramidic outer layer, a Nomex waffle inner layer, and PUMA's new proprietary 'middle layer' offers an unmatched 33% weight reduction, an increase in permeability (breathability) by 55%, and a higher thermal protection by 11% over other manufacturer's 3-layer lightweight designs.

Sizes 46-64, **MOM** **Weight** 240 g/m² (This suit weighs less than 1kg in size 56)

- Main fitting features: Anatomically correct pre-shaped body, less bulk in the driving position, increased freedom of movement and agility, pre-shaped 'slim-fit' sleeves, pre-shaped legs reducing driver's fatigue of the arms and legs.
- PUMA's own proprietary EMS system of elasticized panels at the back of the arms, replacing soft knit gussets, reduces the weight and bulk in the shoulder area, accommodating of Hans head and shoulder restraints.
- Superior driver comfort through forward positioned 'seamless' seaming, large lower lumbar stretch panel to reduce abdominal pressure in the seated position.

AVANTI SUIT Art. 508525





PUMA MOTORSPORT

RACEWEAR



TRIONFO SUIT Art. 503572



03 BLUE-WHITE



01 BLACK-WHITE



02 RED-WHITE



03 BLUE-WHITE



04 WHITE-BLACK

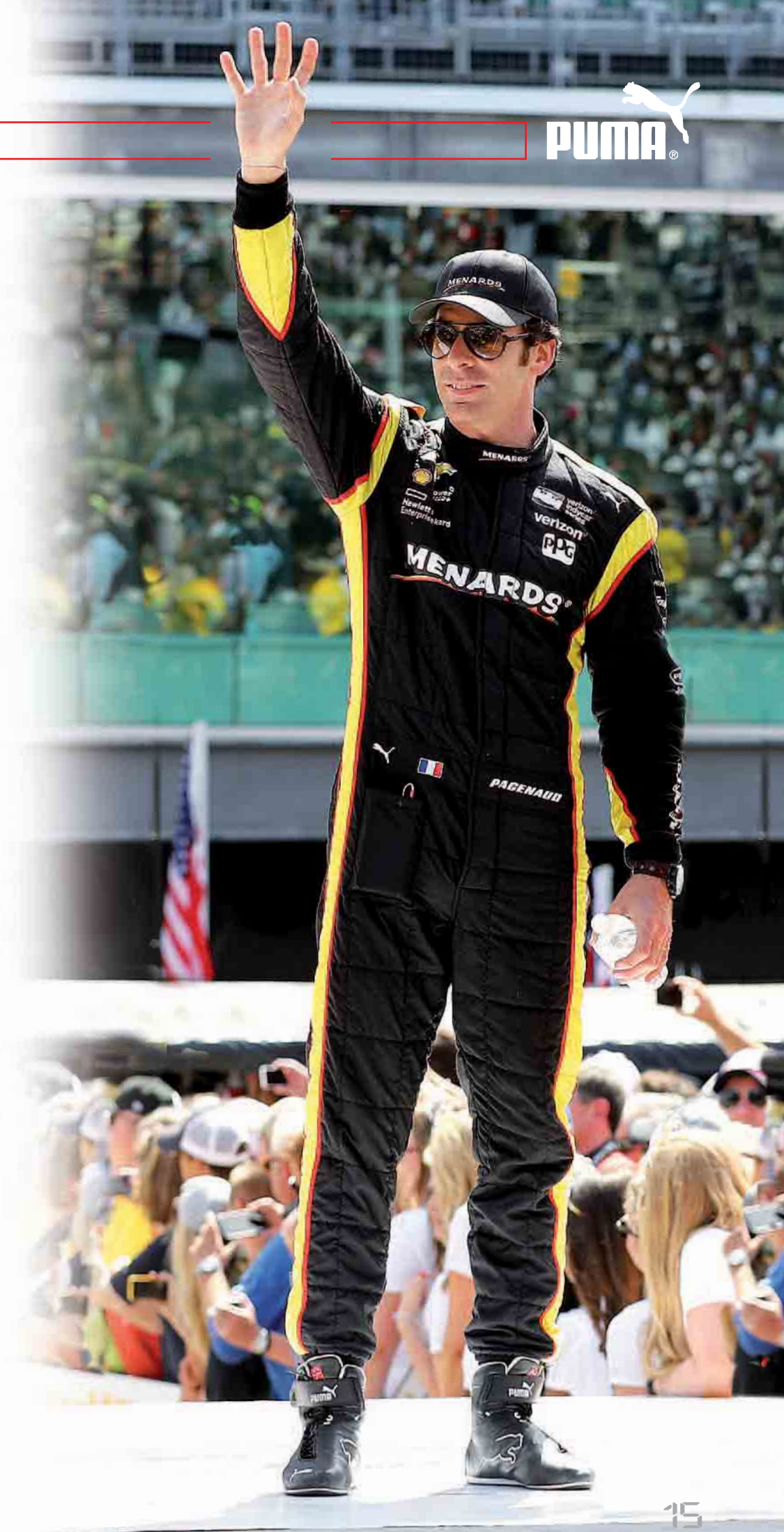
FIA APPROVER FIA (8856-2000) approved
sfi SFI 32A/5 approved

Involvement in F1, Indycar, U.S. Oval races, DTM has distinguished PUMA as the design and technological leader in Motorsport today. Designs and technology derived from feedback of professional drivers at the top of each discipline has created a database from which PUMA is setting the newest standards in racewear apparel. The Trionfo is our most comfortable suit, and takes advantage of the technology, developed during the cooperation with the major teams in Motorsport all over the world.

Sizes 46-64, **MOM Weight** 390 g/m² (This suit weighs 1490 grams in size 54)

- Full Movement System (FMS): Stretch paneling at the full arms holes for professional top drivers
- It fits with all cockpit/seat environments
- Anatomically correct, pre-shaped body creating less bulk in the seated position
- Collar constructed of a soft knit internal lining
- Pre-shaped sleeves for extended movement and reduction of fatigue
- Flat seams on sides for a better contact with the seat
- Knees and calves in stretch material (FMS feature)
- Kidney area in stretch material for extra extended movement (FMS feature)
- Super flat epaulette area to avoid bulk around belt/Hans collar

TRIONFO SUIT Art. 503572





FUTURE CAT SUIT Art. 503576



O1 BLACK-WHITE



O2 RED-WHITE



O3 BLUE-WHITE



O4 GREY-WHITE



O2 RED-WHITE

FIA (8856-2000) approved

SFI 3.2A/5 approved

FUTURE CAT SUIT Art. 503576

The PUMA Future Cat Suit combines well established technology with a classic bicolor design.

Sizes 46-64, **MOM** **Weight** 405 g/m² (25% lighter than conventional designs)

The PUMA Future Cat suit utilizes a lightweight and breathable satin Nomex III material in a unique 3 layer design offering unmatched weight reduction, superior transpiration, higher thermal protection, and increased

durability over other 3-layer lightweight designs.

- Distinctive PUMA form stripe epaulettes

GLOVES



PUMA MOTORSPORT GLOVES



PUMA MOTORSPORT

GLOVES





SLW GT7 Art. 898122



SLW GT7
Super Grip Glove (long)
Art. 898122



O1 BLACK

FIA APPROVED FIA (8856-2000) approved

SLW GT7 (long) This is Puma's latest technology in weight reduction. Tested for over two years with World Champions, this gloves feature a weight reduction of the knit material as well as a "winner" celebration graphic, highlighted by the gold or silver accents making this glove unique and elegant. A re-designed super grip palm enables a firm handling of the steering wheel in the most demanding action. Performed as all Puma racing gloves.

Sizes 8-12



O1 BLACK-GOLD



O2 RED-SILVER



O3 WHITE-GOLD

PRO-FIT CAT
Pittards Leather Palm (long)
Art. 040243



FIA APPROVED FIA (8856-2000) approved
sfi SFI 33/5 approved

The PRO-FIT CAT glove meets the strict SFI 3.3/5 regulations and surpasses the current FIA 8856-2000 specifications. It features a fully encompassing sculptured construction of 180 gram Knit Nomex on both back of the hand and throughout the interior of the hand, fingers and palm. Sculptured pre-formed finger construction provides precise fitment and relaxed grip, while the Pittards Fireproof Digital leather tactile pads provide hardwearing and maximum grip within the interior of the glove.

Sizes 8-12



FURIO
Rubber Grip Palm (short)
Art. 040634



FIA APPROVED FIA (8856-2000) approved
sfi SFI 33/5 approved

The FURIO glove is taken down from the successful PROFIT range with an updated style element. Meets both SFI 3.3/5 and current FIA 8856-2000 specifications, Constructed with pre-curved panels to ergonomically fit the fingers while in driving position. This feature, combined with the high coefficient of grip delivered from the rubberized traction surface provides unparalleled driving comfort and confidence with the steering wheel no matter what type of vehicle you drive.

Sizes 8-12





AVANTI Art. 040633

AVANTI
Pittards Leather Palm (long)
Art. 040633



FIA APPROVED FIA (8856-2000) approved
sfi SFI 33/5 approved

The AVANTI glove has been designed for maximum grip and comfort. It provides great focus on all the contact points between the driver and the car's steering wheel. The gloves have outside stitched fingers on palm side with advanced gripping system throughout the palm of the glove. Sculptured preformed finger construction provides precise fitment and relaxed grip, while the Pittards Fireproof Digital Leather tactile pads provide hardwearing and maximum grip within the interior of the glove.

Sizes 8-12



01 BLACK

02 RED

03 BLUE

04 WHITE

PODIO
 Rubber Grip Palm (short)
 Art. 040839



FIA (8856-2000) approved
 SFI 33/5 approved

PODIO offers the same optimum fit and comfort of AVANTI. It focuses on all of the contact points between the driver and the steering wheel. Outside stitched fingers on palm side of the gloves complement the advanced gripping system throughout the palm of the glove. Constructed with pre-curved panels to ergonomically fit the fingers while in driving position.

Sizes 8-12



PODIO Art. 040634





PUMA
MOTORSPORT
FOOTWEAR



PUMA MOTORSPORT

FOOTWEAR



SLW II Pro mid N Art. 306060

FIA APPROVED FIA (8856-2000) approved

sfi SF FOUNDATION INC. SFI 3.3/5 approved



02 RED-WHITE



01 BLACK-WHITE



02 RED-WHITE

Used by the leading and winning drivers in F1 during the last seasons, this style finally comes to the market by popular request: an extremely light weight shoe, in the area of appr 120grm/shoe, that has no rival in the trade.

- Super Light Weight shoe with improved durability
- Same upper fireproof textile material that racing suites are made of
- Thin rubber outsole with grippy pattern: durability and secure pedal control
- EVA thin midsole with a wedge design allowing vibration dampening and sufficient insulation from the floor panel
- External heel carbon heel counter: lightweight support that looks also cool
- The shoes come with 2 sets of sockliners: one with Carbon plate and one without for a customized driving experience. Each driver can then chose his own sockliner to fit his driving style and braking demand of the car and the circuit. This is a unique feature available in the market only from Puma and on SLW PRO II racing shoe.

Sizes 39-47

SLW II Pro Art. 306060



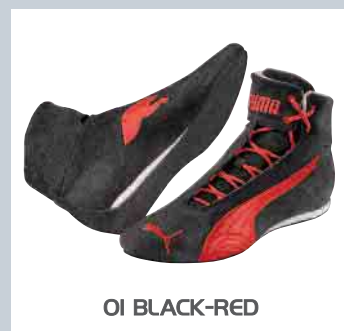
FUTURE CAT III Pro mid P Art. 306069

FIA APPROVED FIA (8856-2000) approved

sfi SFI 33/5 approved



O1 BLACK-RED



O1 BLACK-RED



O2 RED-BLACK



O3 ROYAL BLU-WHITE

The Puma legacy and innovation is at the base of this style, Future Cat Pro, a long time seller now revisited in this Mk 3 spec. Maintaining its unique and innovative asymmetrical lacing, avoiding pressure on the front veins of the foot, reducing the fatigue in endurance races. A simple and classic design, with a new outsole that has been in high demand for decades. Its upper material is a comfortable soft and smooth suede.

The right degree of stiffness for heavy braking, and a direct feeling of the pedals, makes this the "Pedal to the Metal" shoe. A vibration absorbing EVA wedged midsole completes the tech pack.

Sizes 39-48

SL TECH PRO mid L + Pro Art. 306071

FIA APPROVED FIA (8856-2000) approved

sfi SFI 33/5 approved



O2 RED-WHITE



O1 BLACK-WHITE



O2 RED-WHITE



O3 ROYAL BLUE-WHITE

Another top-seller has been revisited. Premium full-grain leather and oil-resistant rubber outsole. Alternative velcro closure offers customized comfort and fit, preventing the foot from falling asleep during long runs on the track.

Low-profile outsole is a re-invented interpretation of Puma UNI construction offering pure performance benefits. The co-molded rubber heel allows the perfect roll and range of motion required by many drivers. It assures also the ideal insulation from the car floor to limit the vibrations reach the foot. Asymmetrical forefoot pad follows the natural outline of the foot ensuring maximum contact and pedal feel.

More simplified toe-box design will deliver more form fitting fit. Unique and tonal chequer graphic heel caps will make this shoe distinctive with a touch of style and motorsport look.

Sizes 39-47

EVERFIT + Pro Art. 305337

FIA APPROVED FIA (8856-2000) approved

sfi SFI 3.3/5 approved



O1 BLACK-WHITE-RED



O1 BLACK-WHITE-RED

Equipped with our EverFit technology.

Sizes UK 5-12

- Full grain leather upper; super strong and supple
- The EverFit foot cage provides superior adjustability and lateral stability
- Rounded heel cup for that natural foot movement on the pedals
- Textured rubber outsole for optimum grip
- Classic PUMA silhouette

EVOSPEED + Pro Mid L Art. 303935

FIA APPROVED FIA (8856-2000) approved

sfi SFI 3.3/5 approved



O3 BLACK-BLUE



O2 JASMIN GREEN-WHITE



O3 BLACK-BLUE

Constructed of premium full-grain leather and oil-resistant rubber outsole. Alternative velcro closure offers customized comfort and fit, preventing the foot from falling asleep during long runs on the track. Low-profile outsole is a re-invented interpretation of PUMA UNI construction offering pure performance benefits. The co-molded rubber heel allows the perfect roll and range of motion required by F1 pilots. Asymmetrical forefoot pad follows the natural outline of the foot ensuring maximum contact and pedal feel.

Sizes UK 5-12, 13

- Upper: Premium full-grain leather, synthetic leather, alternative velcro closure, Nomex lining
- Midsole: UNI Chassis
- Outsole: UNI COntraction and oil-resistant rubber outsole

UNDERWEAR



PUMA
MOTORSPORT
UNDERWEAR



PUMA MOTORSPORT



UNDERWEAR



FIA APPROVED FIA (8856-2000) approved
sfi SFI 3.3/5 approved



SLW Top Art. Art. 843555



OI WHITE

Puma Motorsport innovation at the pinnacle with the SLW (Super Light Weight) underwear, seamless garments giving a unique performance. No seams will interfere with the movements and pressure points on the driver seat. There are no seams on the shoulder where the Hans and belts push into the skin. Still meeting FIA standards, the wrist hem has a reduced thickness. Last but not least the special honeycomb construction of the textile increases the breathability when worn.

Sizes XS/S – M/L – XL/XXL

SLW Top Art. 843555





SLW Top Art. 843555

FIA APPROVED FIA (8856-2000) approved
 sfi SFI 3.3/5 approved



SLW Bottom
 Art. 843556

Puma Motorsport innovation at the pinnacle with the SLW (Super Light Weight) underwear, seamless garments giving a unique performance. No seams will interfere with the movements and pressure points on the drive seat. There are no seams on the shoulder where the Hans and belts push into the skin. Still meeting FIA standards, the wrist hem has a reduced thickness. Last but not least the special honeycomb construction of the textile increases the breathability when worn.

Sizes XS/S – M/L – XL/XXL



OI WHITE



BALACLAVA Open Face Art. 502319

SLW BALACLAVA
Open Face
Art. 897766



O1 WHITE

PUMA's Professional anatomically sculpted single eyehole balaclava features a combination of a 2-layer soft knit Nomex front and single-layer rear with externally flat seam stitching reducing the overall bulk and pressure points of conventional designs.

The serge-seamed eyehole gives the flexibility of the driver to position the tip of the opening over the nose in use or under the chin during griding. Drinking tube eyeheole is provided on the front.

Sizes: OSFA

FIA APPROVED FIA (8856-2000) approved
sfi SFI 33/5 approved



LONG SLEEVE Mock Collar Art. 502897



O1 WHITE

PUMA's Nomex underwear is the lightest and most comfortable under garment in the racing industry today.
 The long sleeve undershirt features a 'Mock' collar with PUMA badge and serged seams for comfort and durability.
 Constructed of soft knit Nomex III, it has superior wicking characteristics keeping you cooler and adding protection that makes that critical difference.
Sizes S-XXL

FIA APPROVED FIA (8856-2000) approved
sfi SFI 33/5 approved



LONG PANTS Art. 502317



O1 WHITE

This PUMA's Nomex underwear is the lightest and most comfortable under garment in the racing industry today. The long underpants features an encapsulated elasticized top and serged seams for comfort and durability.
 Constructed of soft knit Nomex III, it has superior wicking characteristics keeping you cooler and adding protection that makes that critical difference.
Sizes S-XXL

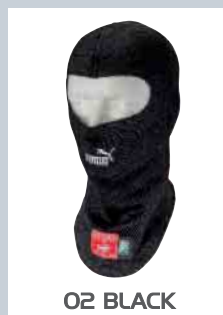


FIA APPROVED FIA (8856-2000) approved
sfi SFI 3.3/5 approved

BALACLAVA
Open Face
Art. 502319



01 WHITE



02 BLACK

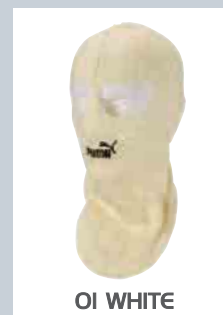
PUMA's Professional anatomically sculpted single eyehole balaclava features a combination of a 2-layer soft knit Nomex front and single-layer rear with externally flat seam stitching reducing the overall bulk and pressure points of conventional designs. The serge-seamed eyehole gives the flexibility of the driver to position the tip of the opening over the nose in use or under the chin during gridding.

Sizes OSFA



FIA APPROVED FIA (8856-2000) approved
sfi SFI 3.3/5 approved

BALACLAVA
Double Eye Hole
Art. 502320



01 WHITE



02 BLACK

PUMAs Professional anatomically sculpted dual eyehole balaclava features a combination of a 2-layer soft knit Nomex front and single-layer rear with externally flat seam stitching reducing the overall bulk and pressure points of conventional designs. The serge-seamed eyeholes result in a better confirmation to the nose and face. Preferred application is in methanol environments for such usage as re-fueler crewmembers.

Sizes OSFA

SOCKS

Art. 897483 **Compression socks – knee length**

The benefit of the compression effect on the surface circulation is a faster blood circulation. Compression effect is widely used in all active sports. Seamless construction on the footprint area. 84% of Viscose fiber helps breathability.

Sizes S-XXL



O1 WHITE

FIA APPROVED FIA (8856-2000) approved

Also available:

SOCKS – ankle length/knee length
Traditional soft knit Nomex. With elasticized shank, reinforced toe and heels. **Sizes S-XXL**

Art. 502321 Art. 502322
ankle length knee length



O1 WHITE

FIA APPROVED FIA (8856-2000) approved

sfi SFI 33/5 approved

PADS Soft

Art. 030345

Fireproof

Nomex® pads

Size M elbow pad

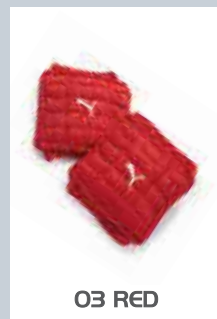
Size L knee pad



O1 BLUE



O2 BLACK



O3 RED





PUMA
MOTORSPORT
KARTING



KARTING SUIT

Art. 897942 (adult)

Art. 897941 (kid)



CIK_FIA Level 2 homologation

PUMA KARTING SUIT



KARTING SUIT Art. 897942 (adult) Art. 897941 (kid)



A new graphic highlights the 2017 Puma kart racing suit, CIK homologated Level 2. Its clean and still remarkable design allows the racer to add his own sponsor logos or badges without compromising the existing graphics.

Space to add driver name is available on the side of the leg and on the upper back.

The pocket chequered flag design represents a visual link to the new karting gloves and shoes. 100% Polyester outer layer and 100% Cotton lining, the suit grants all the abrasion and strong protection, whilst the inner layer will absorb perspiration and will feature a comfortable feeling on the skin.

The suit represents one of the latest manufacturing technology in terms of graphic and overall print.

Adult Sizes: 46-64 **Kid Sizes:** 110-130-150

KART CAT Mk 2 - Gloves
Art. 897938



02 RED/FLUO YELLOW

Made with the same technology of F1 gloves, the only difference is in the non-fireproof material.

The Puma karting glove represents a visual innovation and graphically aligned with the kart racing suits and shoes.

Pre-shaped for maximum performance, the gloves have a silicon based antislip pattern on the palm for high grip, a distinctive and unique graphic on the upper and outside seams in the critical contact points.

Sizes 5 -12

Non-fireproof



PUMA's KART CAT III mid L
Art. 306070

Non-fireproof



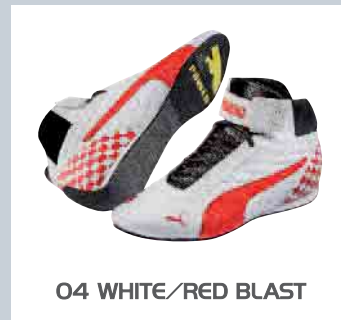
01 BLACK/FLUO YELLOW



02 RED/FLUO YELLOW



03 BLUE/FLUO YELLOW



04 WHITE/RED BLAST

PUMA's KART CAT III mid L shoe is for the young karting professional who demands the best in footwear protection and performance. Constructed of full-grain and strong leather and synthetic leather for much durability. Forefoot and toe box have a smooth and clean design. All stitching are finely made giving the shoe a top quality level content. Barrel lacing with protected soft eyelets ensure quick lacing and proper conformation to the foot, improving pedal control and feel. A perforated tongue at the center of shoe promotes transpiration and removes heat from the driver's foot. "Power" and "Brake" livery along with the PUMA logo on the sole is hallmark of a Karting professional who demands the best.

Sizes 34-47

KART CAT MID II
Art. 301047

Non-fireproof



05 BLACK/WHITE



06 WHITE/PUMA RED

PUMA's KART CAT MID II is for the young karting professional who demands the best in footwear protection and performance. Constructed of full-grain leather and synthetic leather, PUMA's proprietary CM-EVA/duo Cell at its midsole, and an oil resistant non-skid rubber outsole. Features a positive velcro closure at the mid-top shank with an enlarged cut-out in the Achilles area ensures freedom of movement front to rear at the ankle without sacrificing the necessary ankle protection from side-to-side. Barrel lacing with protected soft eyelets ensure quick lacing and proper conformation to the foot, improving pedal control and feel. A perforated tongue at the center of shoe promotes transpiration and removes heat from the driver's foot. "Power" and "Brake" livery along with the PUMA logo on the sole is hallmark of a Karting professional who demands the best.

Sizes FR 36-47

Non-fireproof



Kart Performance underwear Art. 654612



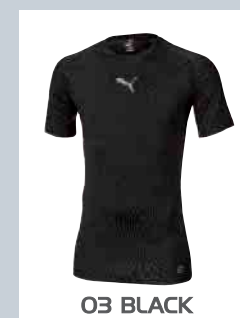
This long sleeve shirt is designed to work with your body's natural systems to help you to enhance and maximize your performance. Elastane content provides long lasting elasticity for enhanced freedom of movement. PowerCELL grants unique breathability and coolness. Main Material 1: 80% polyester 20% elastane ; jersey; 190.00 g/m²; finish: bio-based wicking finish

Sizes S-XXL

Non-fireproof



Kart Performance underwear Art. 654613



This short sleeve shirt is designed to work with your body's natural systems to help you to enhance and maximize your performance. Elastane content provides long lasting elasticity for enhanced freedom of movement. PowerCELL grants unique breathability and coolness. Main Material 1: 80% polyester 20% elastane; jersey; 190.00 g/m²; finish: bio-based wicking finish

Sizes S-XXL

FIA APPROVED FIA (8856-2000) approved
sfi SFI 33/5 approved



Kart Performance underwear Art. 6546II



03 BLACK



04 WHITE

This long sleeve shirt (warm spec) is designed to work with your body's natural systems to help you to enhance and maximize your performance. Mock up collar protects you further in cold weather. Elastane content provides long lasting elasticity for enhanced freedom of movement. PowerCELL grants unique breathability and temperature control capacity.
 Main Material 1: 80% polyester 20% elastane; jersey; 190.00 g/m²; finish: bio-based wicking finish.
Sizes S-XXL

PUMA KARTING SHOES

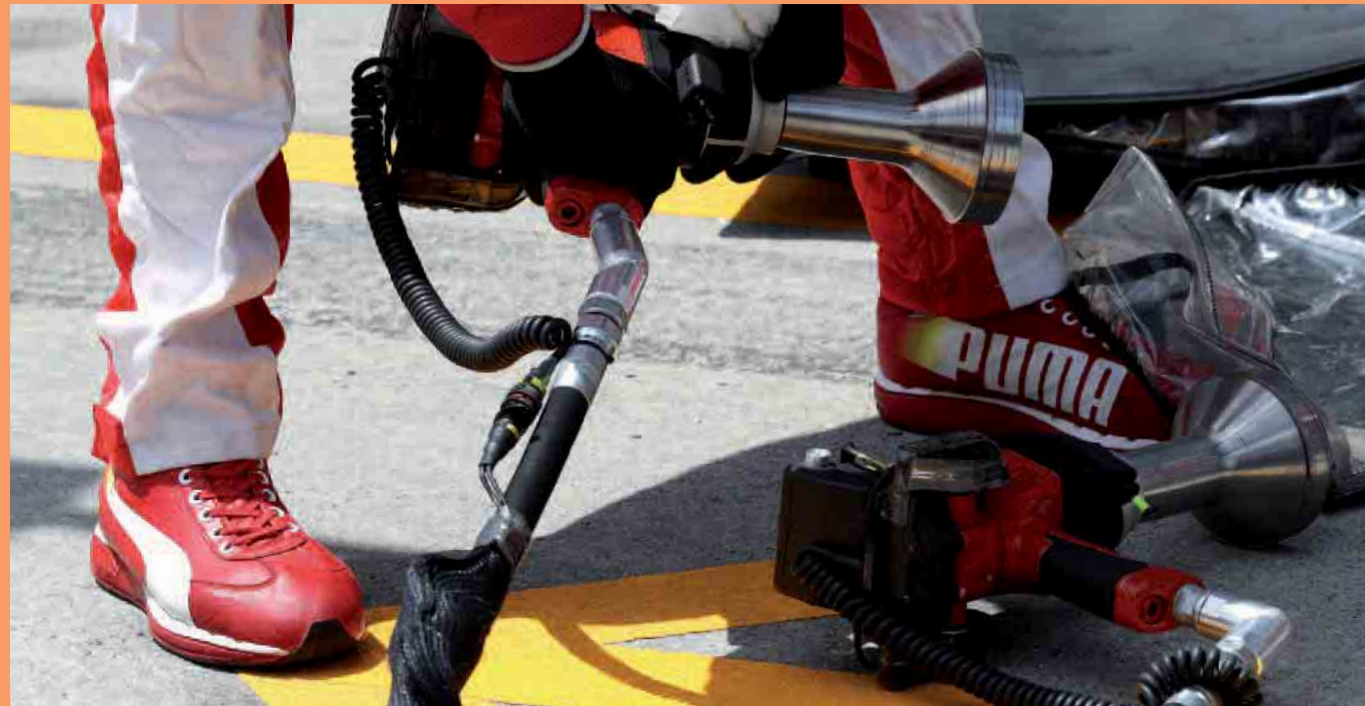




PUMA
MOTORSPORT
MECHANIC
GEAR



PUMA MOTORSPORT MECHANIC GEAR



MECHANIC GEAR

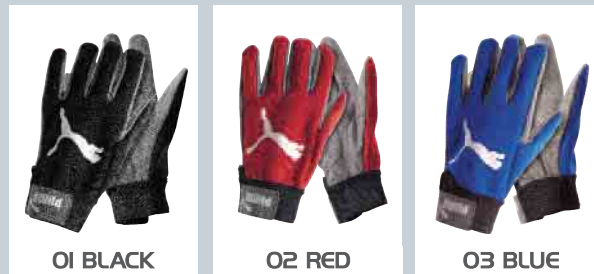


Non-fireproof

CAT MECH GLOVES Microfiber
Art. 040313

The PUMA CAT MECH Gloves are providing perfect fit and also good feeling by doing difficult jobs. It is one of the best allround gloves in the Motorsport market. The microfiber material used for this glove make it washable quite a few times, so the glove can last long: very good value for your money!

Sizes 8-12



01 BLACK

02 RED

03 BLUE

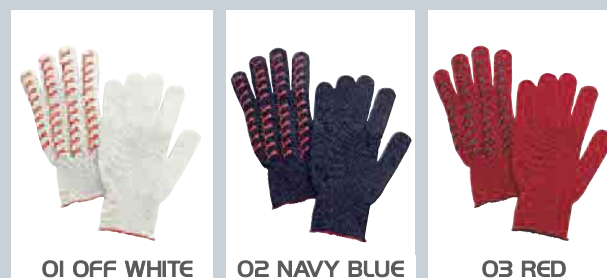


Non-fireproof

WORKING GLOVES Polyamid
Art. 040347

The PUMA CAT MECH Gloves are providing perfect fit and also good feeling by doing difficult jobs. It is one of the best allround gloves in the Motorsport market. The microfiber material used for this glove make it washable quite a few times, so the glove can last long: very good value for your money!

Sizes 8-12



01 OFF WHITE

02 NAVY BLUE

03 RED



FAAS 500 team trainer shoe Art. 185160

Non-fireproof



31 BLACK-WHITE



31 BLACK-WHITE

Extremely comfortable and functional team shoe to spend hours in the paddock walking in it. Light weight, stable and solid at the same time. Full breathability performance, Faas500 features rubber lip contour giving protection against water on the tarmac when raining.

Sizes UK 5-13

REPLI CAT. 3 Low Suede Art. 303390

Non-fireproof



06 WHITE/BLACK



03 BLACK/WHITE



05 RIBBON RED/WHITE



06 BLACK/WHITE

The REPLI CAT.3 Low is the ideal product for the race sport enthusiast and lifestyle statement at the same time. As a take down version of the professional footwear this shoe is a must for every Motorsport activity, no matter if you perform as a driver or spectator.

Sizes UK 5-13

- Upper: Soft suede, supersoft full grain leather
- Midsole: EVA
- Outsole: Oil resistant and non slippery rubber



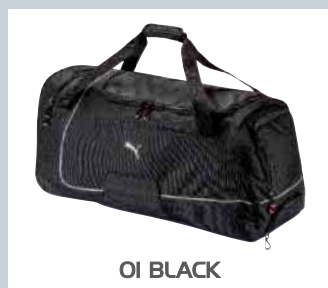
PUMA MOTORSPORT BAGS

WHEEL Bag
Art. 070287



The Wheel Bag is for the team on the go. Medium sized bag equipped with wheels and concealed pullout handle. Comes with a convenient carry handle, adjustable shoulder strap, and outside pockets for ease of transport.

Sizes 75 x 36 x 34 cm



WHEEL Bag Art. 070287





OI BLACK

The new Puma Motorsport Backpack has been designed in cooperation with the drivers and crew members always having the traveling needs in mind. Mesh pockets on the outside as well as a laptop compartment inside represent a must have today and this backpack has them - plus an additional lining slip in pocket on top of the laptop compartment inside – zip closure with red accents and loops which can be locked with a padlock (not included) to avoid undesired intrusion into the backpack. Its design allows the different teams to apply their various team logos. Durable and high resistant material will guarantee a long life to this Puma item.

Sizes 30 x 48 x 15 cm



MOTORSPORT BACKPACK
Art. 074927 OI



OI BLACK

The Puma Motorsport Helmet Bag – now revised in design for 2017 - is the most thoroughly tested bag on the market today due to the fact that it has traveled the F1 circuit and carried the world's most famous helmets. Ventilation holes guarantee the best storage of your helmet immediately after use. Comes with useful visor and tear off pockets, functional carry handle, additional external pocket, bottom studs on two sides for both, laying down or upright standing.

Size S 28 x 40 x 25 cm



HELMET Bag
Art. 074925 OI



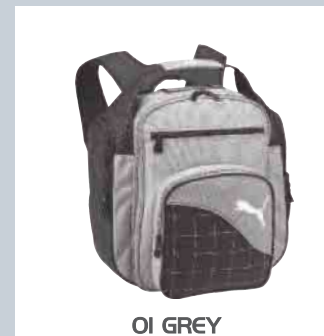
OI GREY

The PUMA Motorsport Helmet large Bag is the most thoroughly tried and tested bag on the market today, having traveled the F1 circuit carrying the world's most famous helmets. Features the capability of storing both helmet and neck device as one, ventilation holes for storing the helmet immediately after use, useful visor and tear off pockets, functional handle, external pocket, rubber stands for both laying down or standing up.

Size L suitable for helmets with neck device



HELMET Bag
Art. 070289



OI GREY

The Co Drivers Backpack has everything you could want in one carry pack. Features include epaulette inspired carry handle, shoulder straps with integrated cellphone case, a separate detachable lap top protection case, internal MP3 holder, side and small back compartments, and pen/instrument holders.

Size 28 x 20 x 37 cm



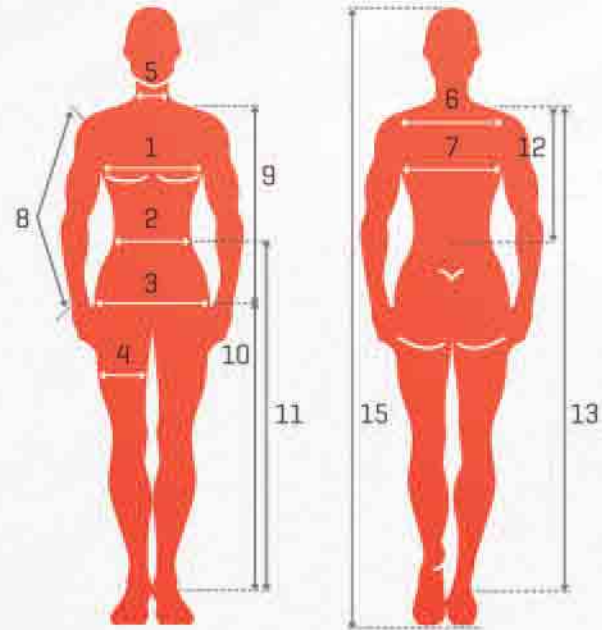
CO DRIVER Backpack
Art. 070290



**AUTO
PERFORMANCE**
COLLECTION 2017

Racesuit measurement chart

- 1 Chest circumference
- 2 Waist circumference
- 3 Hip circumference
- 4 Thigh circumference
- 5 Neck circumference
- 6 Width across top of shoulder
- 7 Width of back [arms raised]
- 8 Sleeve length [elbow bent] to wrist
- 9 Front length collar/crotch
- 10 Inseam
- 11 Length: Waist to ankle
- 12 Length: Back of neck to waist
- 13 Length: Back of neck to ankle
- 14 Front neck to back neck thru crotch
- 15 Total height
- 16 Weight



UK and USA racesuit sizes [inches/lbs]

std size	height person		weight person LBS		chest inches	waist inches	hip inches
	from	to	from	to			
46	5'4" 1/2	5'5" 1/2	108	121	36	31	38
48	5'5" 3/4	5'6" 1/2	121	134	38	33	39
50	5'7"	5'7" 3/4	134	148	39	34	41
52	5'8" 1/4	5'9"	148	161	41	36	43
54	5'9" 1/4	5'10"	161	174	43	37	44
56	5'10" 3/4	5'11" 1/4	174	187	44	39	46
58	5'11" 3/4	6'0" 1/2	187	200	46	41	47
60	6'0" 3/4	6'1" 3/4	200	212	47	42	49
62	6'2"	6'2" 3/4	212	227	49	44	50
64	5'3" 1/4	6'4"	227	240	50	45	52

European racesuit sizes [cm]

std size	height person		weight person Kg		chest cm	waist cm	hip cm
	from	to	from	to			
46	1,64	1,66	49	55	92	79	96
48	1,67	1,69	55	61	96	83	100
50	1,70	1,72	61	67	100	87	104
52	1,73	1,75	67	73	104	91	108
54	1,76	1,78	73	79	108	95	112
56	1,79	1,81	79	85	112	99	116
58	1,82	1,847	85	91	116	103	120
60	1,85	1,87	91	97	120	107	124
62	1,88	1,90	97	103	124	111	128
64	1,91	1,93	103	109	128	115	132

Footwear size chart

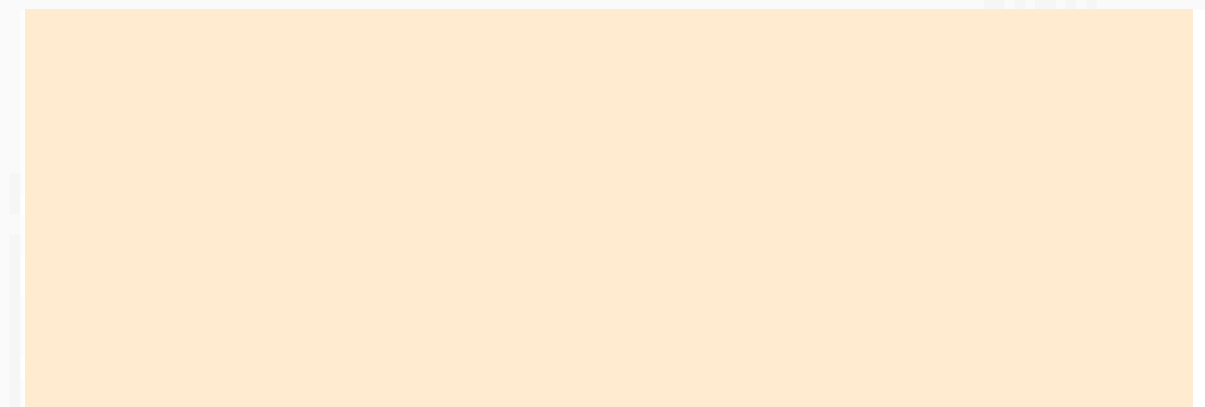
BABY		JUNIOR		TEENAGER		WOMEN		MEN																
ENGLISH SIZE																								
2	3	4	1/2	5	6	7	8	1/2	9	10	11	1/2	12	13	1/2	14	15							
US CHILDREN/MEN																								
3	4	5	1/2	6	7	8	9	1/2	10	11	12	1/2	13	14	15	16								
US WOMEN																								
									4	1/2	5	1/2	6	1/2	7	1/2	8	1/2	9	1/2	10	1/2	11	
FRENCH SIZE																								
19	21	23	25	27	29	31 1/2	32	34	35	36	37 1/2	38 1/2	40	41	42 1/2	44	45	46 1/2	48 1/2	51				
18	20	22	24	26	28	30	32	33	34 1/2	35 1/2	37	38	39	40 1/2	42	43	44 1/2	46	47	49 1/2				
JAPANESE SIZE																								
									20,5	21,5	22,5	23,5	24,5	25,5	26,5	27,5	28,5	29,5						
									20	21	22	23	24	25	26	27	28	29	30					

Gloves size chart

Euro size	8 - XS	9 - S	10 - M	11 - L	12 - XL
Inches	6,5 - 7,5	7,5 - 8,5	8,5 - 9,5	9,5 - 10,5	10,5 - 11,5



Authorised dealer





AUTO PERFORMANCE

RACEWEAR
GLOVES
FOOTWEAR
UNDERWEAR
KARTING
MECHANIC GEAR
BAGS



GRAPHIC DESIGN:
MULTILINEA SAS (ITALY)
PHOTO CREDITS:
Autoimage
Lukas Gorys
Enrico Muraro
Paolo Pellegrini
WR12 - Galeron/Sherif